

StarFoil 106-HS and 80-HS

Automatic Foil Stamping, Embossing and Die-Cutting Press with Mabeg Feeder



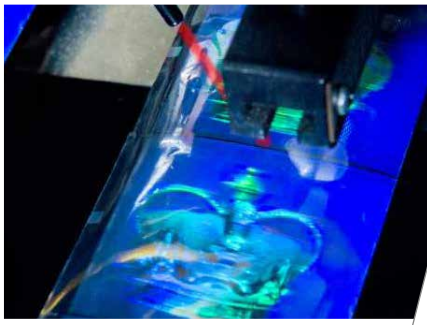
Sheet size 1060 x 760 mm or 800 x 600 mm
Speed 7.500 sheets/hour
Mabeg feeder head for efficient material feed and thin paper
Equipped with 5 foil pulls
Equipped with 3 hologram registration units
Servo motors for foil pull and pressure adjustment
300mm raised frame with higher capacity in feeder and delivery
Air blowers in machine and cross directions help sheets discharge
Longitudinal and transverse foil feed two direction foil feeding functions
Short change-over times

Starfoil latest's automatic foil stamping, embossing and die-cutting machines offer customers highest stamping quality, maximum production speed, high foiling accuracy, easy operation and consistent production.

The machine gives easy access to the foils and stamping dies and is used for all kind of packaging and print finishing such as folded cartons, labels, tobacco and security applications.

StarFoil
TECHNOLOGY

We handle pressure!



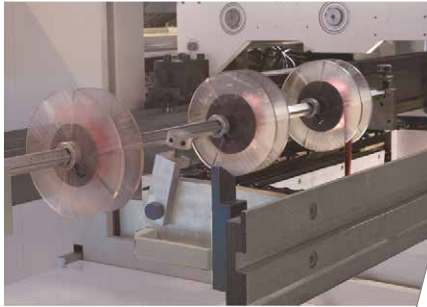
Hologram registration unit



Touch screen control



Mabeg feeder head



250 mm roll diameter



Honeycomb plate with toggle hook clamping system



Delivery with inspection table

Print specification	106-HS	80-HS
Maximum sheet size	1060 x 760 mm	800 x 600 mm
Minimum sheet size	450 x 370 mm	297 x 210 mm
Maximum stamping / embossing area	1020 x 740 mm	760 x 580 mm
Maximum die-cutting area	1045 x 745 mm	785 x 585 mm
Maximum mechanical speed	7500 sheets/hour	7500 sheets/hour
Paper range	90 grs. - 2.0 mm	90 grs. - 2.0 mm
Grip distance	8 mm	7 mm
Foil / emboss specification		
Maximum diameter of foil roll	250 mm	250 mm
Foil pulls	5	5
Maximum foil advance	750 mm	800 mm
Heating sectors	20	20
Machine specification		
Height of feeder stack	1600 mm	1400 mm
Height of delivery stack	1350 mm in non stop condition	1150 mm in non stop condition
15,4" / 10 Operation + foil screen	2+1	2+1
Non stop feeding / delivery	standard	standard
Total capacity	46 kW	35 kW
Nett weight	23.000 kgs	13.000 kgs
Maximum impression strength	350 tonnes	200 tonnes
Dimensions	626 x 456 x 258 cm (lxwxh)	567 x 390 x 237 cm (lxwxh)